

**Earthquake**

Operator's Manual  
Original Operating  
Instructions

**Two-Person  
Earth Auger  
Powerhead  
9800B/H**



Get parts online at  
[www.GetEarthquake.com](http://www.GetEarthquake.com)

OM9800B  
Rev. 01/27/11  
© 2011 Ardisam, Inc.  
All Rights Reserved.



**INTRODUCTION**

**THANK YOU . . .**

for purchasing an Earthquake Earth Auger Powerhead from Ardisam, Inc. We guarantee that this powerhead conforms to applicable North American safety standards, and have worked to ensure that it meets high standards for usability and durability. With proper care, your powerhead/auger will provide many years of service. Please take the time to read this manual carefully to learn how to correctly operate and maintain your powerhead/auger. Congratulations on your investment in quality.

**CONTENTS**

Introduction: Model Identification/Registration..... 2

Safety ..... 3

Pre-Operation ..... 4

Operation ..... 5

Maintenance ..... 5

Storage ..... 6

Service, Troubleshooting, and Repair ..... 6-7

Parts Explosion and Parts List ..... 8-9

Warranty ..... 10

**MODEL IDENTIFICATION**

Your earth auger powerhead has a model/serial number decal located on the side of the engine near the muffler. The engine serial number is located on the top plate of the muffler guard. Write these numbers and the model number in the space provided. You will need these numbers if you order parts. Fill out and mail the registration card located in your parts packet. Warranty is valid only if your completed registration card is received by Ardisam, Inc., at time of purchase.

Model Number \_\_\_\_\_

Serial Number \_\_\_\_\_

Engine Serial Number \_\_\_\_\_

Date of Purchase \_\_\_\_\_

Place of Purchase \_\_\_\_\_

## SAFETY

### OWNER'S RESPONSIBILITY

Accurate assembly and safe and effective use of the earth auger unit is the owner's responsibility.

1. Read and follow all safety instructions.
2. Carefully follow all assembly instructions.
3. Maintain the earth auger unit according to directions and schedule included.
4. Ensure that anyone who uses the earth auger unit is familiar with all controls and safety precautions.

### CAUTIONS AND IMPORTANT NOTES

Two symbols which draw attention to information of special interest appear throughout this manual. These comments range in importance from helpful hints to warnings about risk of personal injury. Please take the time to read and understand them.

### IMPORTANT SAFETY PRECAUTIONS

Operate the earth auger unit according to safety instructions and recommendations outlined here and inserted throughout the text. Make sure anyone who uses the earth auger unit has read the instructions and is familiar with the controls.



This symbol points out important safety instructions which if not followed could endanger your personal safety. Read and follow all instructions in this manual and any others provided with this equipment.

1. The earth blade is very sharp. Use extreme caution when drilling a hole or replacing the blade.
2. Do not carry the earth auger unit between holes with the engine running.
3. The auger should not rotate when the engine is idling. If it does rotate when engine is idling, contact Ardisam, Inc. for instructions.
4. Always keep hands and feet clear of rotating auger.
5. Do not wear loose clothing while operating the earth auger unit.
6. Do not allow children to operate this earth auger unit. Do not operate the earth auger unit without proper instruction.
7. Do not operate any power equipment under the influence of alcohol or drugs.
8. The two-person earth auger is designed to be operated by two people. One person trying to operate the two-person auger alone will result in serious injury.

### WARNING

WARNING INDICATES A HAZARD WHICH, IF NOT AVOIDED, COULD RESULT IN DEATH OR SERIOUS INJURY AND/OR PROPERTY DAMAGE.

### CAUTION

CAUTION INDICATES YOU CAN BE HURT OR YOUR EQUIPMENT DAMAGED IF THE SAFETY INSTRUCTIONS THAT FOLLOW THIS SIGNAL WORD ARE NOT OBEYED.

### IMPORTANT

INDICATES HELPFUL INFORMATION FOR PROPER ASSEMBLY, OPERATION, OR MAINTENANCE OF YOUR EQUIPMENT.

### WARNING

#### CALIFORNIA PROPOSITION 65 WARNING

ENGINE EXHAUST FROM THIS PRODUCT CONTAINS CHEMICALS KNOWN TO THE STATE OF CALIFORNIA TO CAUSE CANCER, BIRTH DEFECTS, OR OTHER REPRODUCTIVE HARM.

## PRE-OPERATION

### SPARK PLUG INSTALLATION

If your powerhead does not have the spark plug already installed, you will have to install it. Do so by following the instructions given below.

1. Locate the spark plug in the parts packet.
2. With the powerhead laying on the side labeled "**THIS SIDE UP WHEN NOT IN USE,**" place spark plug in spark plug hole. For replacement use Champion RC-12YC only.

**NOTE: A resistor spark plug must be used for replacement.**

3. Turn by hand until snug.
4. Use a wrench or socket to tighten to 180 inch-pounds. **DO NOT OVERTIGHTEN.**

### IMPORTANT PRE-OPERATION NOTES

1. Read engine manual and follow instructions for fuel type, starting, etc.
2. The clutch will transfer maximum power after about two hours of normal operation. During this break-in period clutch slippage may occur. The clutch should be kept free of oil or other moisture for efficient operation.
3. The earth auger unit should be operated no more than 20 degrees in any direction during continuous use and limited to 30 degrees intermittently. This is recommended for adequate lubrication and fuel delivery.
4. When digging in heavy soil, lift the earth auger unit out of the hole once for every one foot of depth.
5. Never run engine indoors. Exhaust fumes are deadly.
6. Do not use an earth auger in ice.

### PRE-START CHECKLIST

1. Read and understand the engine manual and operator's manual that came with your unit.
2. Fill oil sump or check oil level. Check oil level often during engine break-in.
3. Fill fuel tank. Use unleaded, regular gasoline.
4. Be sure spark plug wire is attached to spark plug.

### CAUTION

**DO NOT START YOUR EARTH AUGER UNIT UNTIL YOU HAVE READ THE ENGINE MANUAL THAT CAME WITH YOUR ENGINE, AND THE SECTION IN THIS MANUAL TITLED SAFETY. IF YOU HAVE READ THESE, FOLLOW THE STEPS BELOW TO START YOUR EARTH AUGER UNIT. ALWAYS PERFORM PRE-START CHECKLIST BEFORE STARTING THE ENGINE.**

**IT IS RECOMMENDED THAT THE EARTH AUGER UNIT NOT BE TILTED AT MORE THAN A 30 DEGREE ANGLE FROM THE UPRIGHT POSITION. FAILURE TO DO SO CAN CAUSE FUEL AND/OR OIL LEAKAGE.**

### CAUTION

**NEVER ADD GAS WHEN ENGINE IS RUNNING OR HOT FROM OPERATION. NEVER FILL THE TANK INDOORS. DO NOT SMOKE WHEN FILLING FUEL TANK.**

**NEVER FILL FUEL TANK COMPLETELY. FILL TANK TO 1/2" BELOW BOTTOM OF FILLER NECK TO PROVIDE SPACE FOR FUEL EXPANSION. WIPE ANY FUEL SPILLAGE FROM ENGINE AND EQUIPMENT BEFORE STARTING ENGINE.**

**DO NOT HOLD THROTTLE LEVER WIDE OPEN WHILE STARTING. LOSS OF CONTROL OF POWERHEAD/AUGER COULD RESULT.**

**NEVER RUN ENGINE INDOORS OR IN ENCLOSED, POORLY VENTILATED AREAS. ENGINE EXHAUST CONTAINS CARBON MONOXIDE, AN ODORLESS AND DEADLY GAS.**

**KEEP HANDS, FEET, HAIR AND LOOSE CLOTHING AWAY FROM ANY MOVING PARTS ON ENGINE AND EQUIPMENT.**

**TEMPERATURE OF MUFFLER AND NEAR BY AREAS MAY EXCEED 150° F. AVOID THESE AREAS.**

**BEFORE STORING UNIT, DISCONNECT SPARK PLUG WIRE FROM SPARK PLUG AND ATTACH IT TO RETAINING POST.**

**NEVER STORE ENGINE WITH FUEL IN TANK INDOORS OR IN ENCLOSED, POORLY VENTILATED AREAS, WHERE FUEL FUMES MAY REACH AN OPEN FLAME, SPARK OR PILOT LIGHT.**

### IMPORTANT

**NEVER MIX OIL WITH GASOLINE.**

## OPERATION

### STARTING AND STOPPING

#### To Start Engine:

1. Open fuel shut-off valve.
2. Flip the on/off switch to **ON** position.
3. Move choke lever to the **CHOKE** position.

**NOTE: Do not use the choke to restart a warm engine after a short shut down.**

4. Grasp starter handle and pull rope out, slowly, until it pulls slightly harder. Let rope rewind slowly. Then pull rope with a rapid full arm stroke. Let rope return to starter slowly.
5. When engine fires or starts running, gradually move the choke lever back to the **run** position.

#### To Stop Engine:

1. Flip the on/off switch to the **OFF** position.
2. Close fuel shut-off valve.

## MAINTENANCE

### MAINTENANCE AND STORAGE SAFETY

1. Always allow muffler to cool before filling fuel tank.
2. When storing for over one (1) month, use gas stabilizer in fuel.
3. Do not fill gas tank indoors or when engine is running or is hot.
4. The transmission gear case has four (4) oz. of grease installed at the factory. It is recommended that once a year the gear case be split and the grease level checked. Add grease only if level of grease is below top of the gears. **DO NOT OVERFILL.**
5. For cold weather operation, store the unit in a cool environment. Transferring the unit from a warm to a cold place can cause the build up of harmful condensation.

### ENGINE MAINTENANCE

Refer to the engine manual included in your parts packet for information on engine maintenance. Your engine manual provides detailed information and a maintenance schedule for performing the following tasks:

1. Check oil level every five (5) operating hours and before each use.
2. Change oil after first two (2) operating hours and every 25 operating hours thereafter, more often if operated in extremely dusty or dirty conditions. Change oil while engine is still warm from recent running.

### CAUTION

**TO PREVENT ACCIDENTAL STARTING: ENGINE MUST BE TURNED OFF AND COOL, AND SPARK PLUG WIRE MUST BE REMOVED FROM SPARK PLUG BEFORE CHECKING AND ADJUSTING ENGINE OR EQUIPMENT.**

**DO NOT OPERATE AUGER BEFORE READING THE ENGINE MANUAL PROVIDED IN THE PARTS PACKET.**

### IMPORTANT

**ENGINE CAN OVERHEAT AND BECOME DAMAGED IF DEBRIS BLOCKS THE COOLING FINS OR RECOIL HOUSING.**

### IMPORTANT

**NEVER RUN ENGINE WITHOUT COMPLETE AIR CLEANER INSTALLED ON ENGINE.**

3. Frequently remove dirt and debris from cooling fins, air intake screen, levers and linkage. This will help ensure adequate cooling and correct engine speed.
4. Check air cleaner.
5. Check spark plug yearly or every 100 operating hours.
6. Check engine and auger often for loose nuts and bolts.

## STORAGE

Follow the steps below to prepare your earth auger unit for storage. Read your engine manual for detailed instructions on preparing the engine for storage.

1. Run with gas stabilizer in fuel. Screen in carburetor will glaze shut if gas stabilizer is not used before storage.
2. Drain the fuel system. Run the engine until it stops.
3. Change oil.
4. Remove spark plug, pour one (1) ounce of clean engine oil into spark plug hole. Cover hole with a rag. Pull starter handle slowly several times to distribute oil. Install spark plug. **Do not connect spark plug wire.**
5. Clean entire earth auger unit.
6. Store your earth auger unit in a clean, dry building that is inaccessible to children.

## SERVICE, TROUBLESHOOTING AND REPAIR

### SERVICE INFORMATION

At Ardisam, we build quality and durability into the design of our products; but no amount of careful design by us, and careful maintenance by you, can guarantee a repair-free life for your earth auger unit. Most repairs will be minor, and easily fixed by following the suggestions in the troubleshooting guide in this section. The guide will help you pinpoint the causes of common problems and identify remedies.

For more complicated repairs, you may want to rely on your retailer or an authorized mechanic (contact your retailer for a list of authorized mechanics in your area). A parts catalog is included in this section.

We will always be glad to answer any questions you have, or help you find suitable assistance. To order parts or inquire about warranty, call or write us at the address found in the next column under the section ordering repair parts.

### CAUTION

**DO NOT STORE EARTH AUGER UNIT WITH FUEL IN TANK INDOORS OR IN ENCLOSED, POORLY VENTILATED AREAS, WHERE FUEL FUMES MAY REACH AN OPEN FLAME, SPARK, PILOT LIGHT OR AN IGNITED OBJECT. DRAIN FUEL OUTDOORS AWAY FROM ANY IGNITION SOURCES. USE ONLY APPROVED FUEL CONTAINERS.**

**FOR LONG TERM STORAGE: CLOSE FUEL SHUT-OFF VALVE AND STORE EARTH AUGER UNIT IN AN UPRIGHT POSITION. FAILURE TO DO SO CAN CAUSE OIL LEAKAGE OVER A PROLONGED PERIOD.**

### IMPORTANT

**IN CASE OF A SERVICE PROBLEM, DO NOT SEND EARTH AUGER UNIT BACK TO RETAILER. CONTACT ARDISAM, INC. AT 800-345-6007.**

## ORDERING REPAIR PARTS

Parts can be obtained from the store where your earth auger powerhead was purchased or direct from the factory. They are also available online at [www.getearthquake.com](http://www.getearthquake.com) To order from the factory, call or write to:


**Ardisam, Inc.**  
**1160 Eighth Ave.; P.O. Box 666**  
**Cumberland, Wisconsin 54829**  
**800-345-6007 • Fax (715) 822-4180**  
**Email: [info@ardisam.com](mailto:info@ardisam.com)**

Please include the following information with your order:

1. Part numbers
2. Part description
3. Quantity
4. Model number and serial number

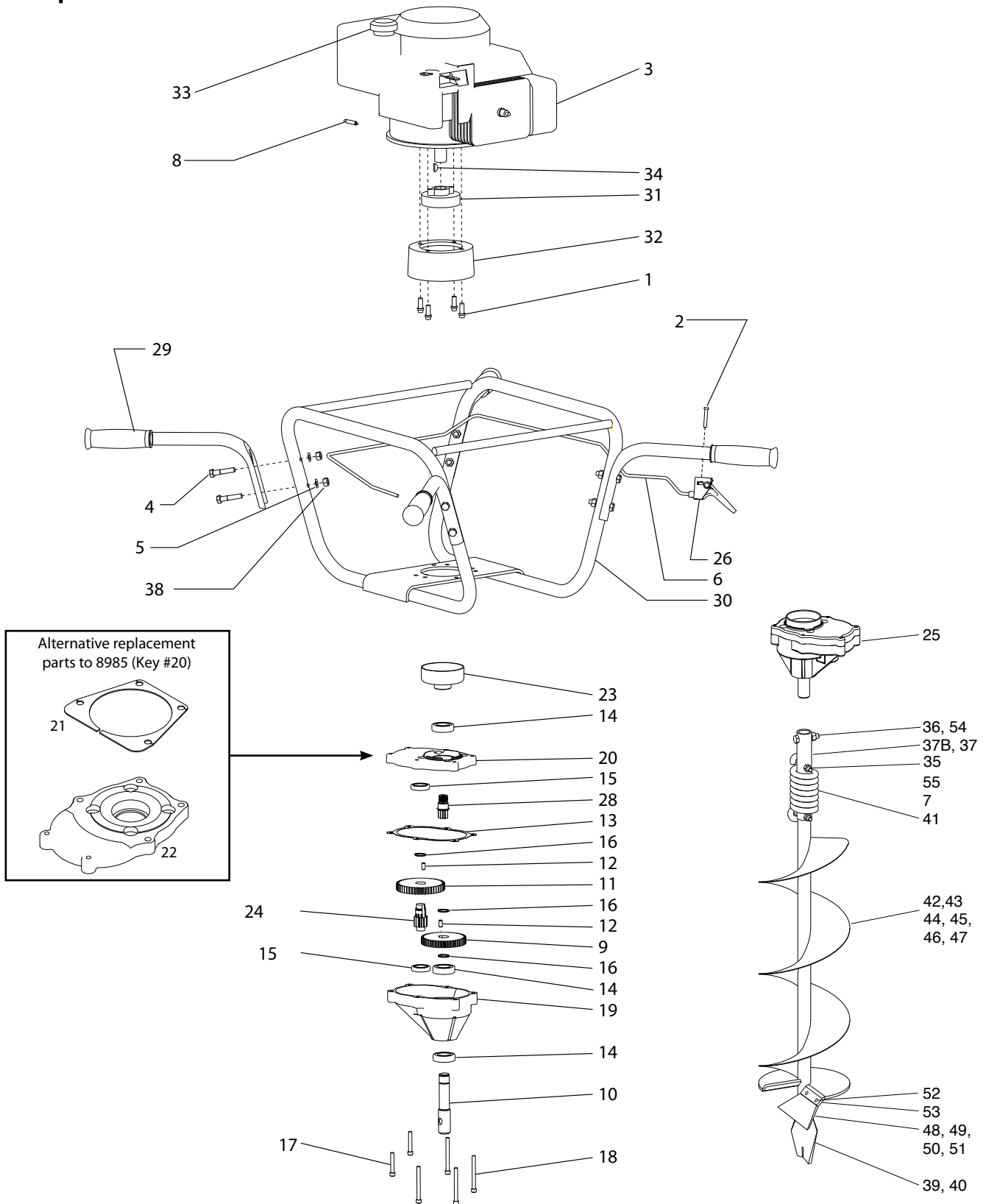
**MINIMUM ORDER: \$10.00**

**TROUBLESHOOTING**

 <b>CAUTION</b>
<p><b>PRACTICE SAFETY AT ALL TIMES. ENGINE MUST BE TURNED OFF AND ALLOWED TO COOL, AND SPARK PLUG WIRE MUST BE DISCONNECTED BEFORE ATTEMPTING ANY MAINTENANCE OR REPAIR.</b></p>

PROBLEM	POSSIBLE CAUSE	REMEDY/ACTION
Engine will not start	1. Power switch off	1. Flip switch to on position
	2. Spark plug wire disconnected	2. Connect spark plug wire to spark plug
Engine runs rough, floods during operation	1. Dirty air cleaner	1. Clean or replace air cleaner
	2. Carburetor out of adjustment	2. Take to authorized Briggs & Stratton / Honda service center
Engine is hard to start	1. Stale fuel	1. Drain old fuel and replace with fresh. Use gas stabilizer at end of season
	2. Spark plug wire loose	2. Make sure spark wire is securely attached to spark plug
	3. Dirty carburetor	3. Clean carburetor, use gas stabilizer, new gas can
Engine misses or lacks power	1. Clogged fuel tank	1. Remove and clean
	2. Clogged air cleaner	2. Clean or replace
	3. Improper carburetor adjustment	3. Take to authorized Briggs & Stratton service center
	4. Spark plug dirty, improper gap, or wrong type	4. Replace spark plug and adjust gap
Auger turns at idle	1. Idle speed too high	1. Adjust idle speed lower
	2. Broken clutch spring	2. Replace both springs
Auger turns, but has no power	1. Carburetor out of adjustment	1. Take to authorized Briggs & Stratton / Honda service center
	2. Broken transmission	2. Replace transmission
	3. Worn clutch shoes	3. Replace clutch shoes and springs
	4. Worn engine lower seal	4. Take to authorized Briggs & Stratton / Honda service center
Auger cuts slowly	1. Damaged point	1. Buy a new fishtail point
	2. Worn out blade	2. Replace blade
Engine runs, then quits	1. Screen in carburetor plugged	1. Clean screen, use gas stabilizer, clean gas can

### Parts Explosion for 9800B





# EARTHQUAKE MODEL 9800B

KEY NO.	PART NO.	DESCRIPTION	QTY.
1	420	BOLT, C-BORE 5/16-24 X 3/4"	4
2	4814	BOLT, PHILLIPS TRUSS HD 10-24 X 1-1/4"	1
3	513	ENGINE, BRIGGS 675 SERIES QUANTUM	1
4	503	BOLT, HEX HD 5/16-18 X 1-1/2"	8
5	504	LOCKWASHER, SPRING 5/16"	8
6	53627	CABLE, THROTTLE 43-1/2"	1
7	60G56	NUT, BI-WAY LOCK 5/16-18	8
8	63124	SPRING, THROTTLE EXTENSION	1
9	8912	GEAR, 44T 3/4" HOLE	1
10	8913	SHAFT, OUTPUT 7/8"	1
11	8914	GEAR, 48T HARD	1
12	8915	DOWEL PIN, STEEL 1/4" X 1/2"	2
13	8919	GASKET, POWERHEAD TRANSMISSION	1
14	8922	BEARING, BALL R12 DOUBLE LIP	3
15	8923	BEARING, BALL R10	2
16	8924	RING, SNAP EXTERNAL 3/4"	3
17	8929	BOLT, SHCS 1/4-20 X 1-1/2" (gear case bottom to gear case top)	2
18	8935	BOLT, SHCS 1/4-20 X 2-1/2" (gear case to handlebar plate)	4
19	8939	GEAR CASE, LOWER HALF	1
20	8985	GEAR CASE, UPPER HALF	1
21	*3004149	SHIM, 9800 TRANSMISSION TOP	1
22	*3004111	GEAR CASE TOP 33/43/51.7/71 CCHP ENGINES	1
23	9018	CLUTCH DRUM	1
24	9214A	GEAR, 10T CLUSTER PINION HT	1
25	9800BTRAN	TRANSMISSION ASSEMBLY 30:1	1
26	9801	TRIGGER ASSEMBLY, LONG THROW (includes p/n 4814)	1
27	--	--	--
28	9814	GEAR, 7T PINION THREADED	1
29	9827	HANDLE, 3-HOLES W/GRIP	4
30	9819	MAIN HANDLEBAR ASSEMBLY	1
31	9825	ROTOR, CENTRIFUGAL CLUTCH COMPLETE	1
32	9837A	MOUNT RING	1
33	9842	GAS CAP	1
34	WK6	WOODRUFF KEY #6	1

KEY NO.	PART NO.	DESCRIPTION	QTY.
35	1423	BOLT-HHCS, 5/16-18 X 2", GRADE 5 (auger shock spring)	2
36	1433	BOLT-HHCS, 3/8-16 X 1-1/2" (auger to powerhead)	2
37	53684	SHOCK TOP 1-PC (used on 6" or larger earth auger)	1
37B	SM	SHOCK MECHANISM (used before 11/05) (used on 6" or larger earth auger)	1
38	60G56	NUT-HEX 2-WAY REVERSIBLE LOCKNUT, 5/16-18	2
39	8958HD	FISHTAIL POINT (used on 4" or larger earth auger)	1
40	8970	FISHTAIL POINT (used on 2" & 3" earth auger)	1
41	8980	SHOCK SPRING	1
42	EA2F	EARTH AUGER, 2" W/FISHTAIL POINT	1
43	EA3F	EARTH AUGER, 3" W/FISHTAIL POINT	1
44	EA4F	EARTH AUGER, 4" W/FISHTAIL POINT	1
45	EA6F	EARTH AUGER, 6" W/FISHTAIL POINT	1
46	EA8F	EARTH AUGER, 8" W/FISHTAIL POINT	1
47	EA10F	EARTH AUGER, 10" W/FISHTAIL POINT	1
48	EB4	EARTH BLADE, 4" (includes EBOLT & ENUT)	1
49	EB6	EARTH BLADE, 6" (includes EBOLT & ENUT)	1
50	EB8	EARTH BLADE, 8" (includes EBOLT & ENUT)	1
51	EB10	EARTH BLADE, 10" (includes EBOLT & ENUT)	1
52	EBOLT	BOLT-HEX, 1/4-28 X 5/8", GRADE 5 (earth blade to auger)	2
53	ENUT	NUT-NYLOC, 1/4-28	2
54	2104	NUT HEX LOCKING, 3/8-16	2
55	WF516	WASHER-FLAT, 5/16"	2
<b>Items Not Shown</b>			
--	EXT6	DEPTH EXTENSION, 6"	1
--	EXT12	DEPTH EXTENSION, 12"	1
--	EXT18	DEPTH EXTENSION, 18"	1
--	EB6HD	HEAVY DUTY EARTH BLADE, 6" (includes EBOLT & ENUT)	1
--	EB8HD	HEAVY DUTY EARTH BLADE, 8" (includes EBOLT & ENUT)	1
--	EB10HD	HEAVY DUTY EARTH BLADE, 10" (includes EBOLT & ENUT)	1
--	9811	SWITCH, ON/OFF (Not Shown)	1

\* PART #S 3004149 AND 3004111 ARE REPLACEMENT PARTS AVAILABLE FOR PART # 8985.



## **9800B EARTH AUGER POWERHEAD**

### **Warranty Terms and Conditions**

#### **PRODUCT WARRANTY: 1-YEAR LIMITED WARRANTY**

Ardisam, Inc., a manufacturing company, warrants this **EARTHQUAKE® EARTH AUGER POWERHEAD** to be free from defects in the material or workmanship for a period of one year from the date of purchase. During the one-year warranty of this product, Ardisam will furnish, at their discretion, parts and labor to correct any defect caused by faulty material or workmanship. Any unit used in a commercial application is covered for a period of 90 days after purchase. This warranty applies to the original owner with a proof of purchase and is not transferable. This guarantee is void unless the warranty card is properly filled out and received by Ardisam, Inc., within 30 days of purchase or go to [www.GetEarthquake.com](http://www.GetEarthquake.com) for online registration.

**For replacement parts, phone 800-345-6007 or go online to [www.GetEarthquake.com](http://www.GetEarthquake.com).**

\*These warranties apply only to products which have not been subjected to negligent use, misuse, alteration, accident, unauthorized parts, failure to use proper fuel and oil, or if repairs have been performed at non-authorized service centers. These warranties supersede all other warranties either expressed or implied and all other obligations or liabilities on our part. Ardisam, does not assume, and does not authorize any other person to assume for us, any liability in connection with the sale of our products. To be at "No Charge," warranty work must be sent directly to Ardisam, Inc. or one of our authorized service centers and performed by them. To obtain warranty service and/or replacement instructions, contact our customer service department at 800-345-6007 Monday through Friday from 8 a.m. to 5 p.m. or visit [www.ardisam.com](http://www.ardisam.com). If you choose to ship your product to Ardisam for warranty repair, you must first have prior approval from Ardisam by calling our customer service department at 800-345-6007 for a return material authorization number (RMA#). Under these circumstances, all items must be shipped prepaid. Ardisam will at no charge, repair or replace, at their discretion, any defective part which falls under the conditions stated above. Ardisam retains the right to change models, specifications and price without notice.

EARTHQUAKE  
A Division of Ardisam, Inc.  
1160 Eighth Avenue; P.O. Box 666  
Cumberland, Wisconsin 54829  
1-800-345-6007 · Fax (715) 822-4180  
E-mail: [info@ardisam.com](mailto:info@ardisam.com)





Earthquake™, Division of Ardisam, Inc.  
1160 8th Avenue, PO Box 666  
Cumberland, WI 54829  
800-345-6007 | Fax 715-822-2223  
Email: [info@ardisam.com](mailto:info@ardisam.com)