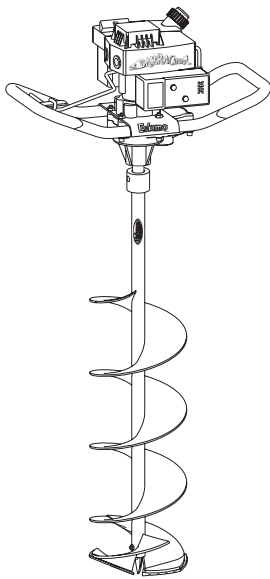




Power Ice Auger Operator's Manual

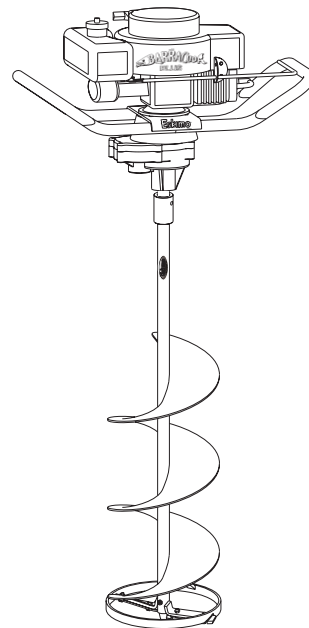
BARRACUDA™



Models

8903B
893B8
893BQ8
893BQ9
893B10

BARRACUDA PLUS™



Models

9003B
9003B8
9003BQ8
9003BQ9
9003B10

IB-893B/9003B-06E
Rev. 08/26/05

© Copyright 2005 Ardisam, Inc.
All Rights Reserved. Printed in USA.



INTRODUCTION, REGISTRATION AND WARRANTY

THANK YOU . . .

for purchasing an Eskimo® Power Ice Auger from Ardisam, Inc. We have worked to ensure that it meets high standards for usability and durability. With proper care, your auger will provide many years of service. Please take the time to read this manual carefully to learn how to correctly operate and maintain your auger. Congratulations on your investment in quality.

REGISTRATION

Fill out and mail the registration card located in your parts packet. Warranty is valid only if your completed registration card is received by Ardisam, Inc., at time of purchase.

Model Number _____

Serial Number _____

Engine Serial Number _____

Date of Purchase _____

Place of Purchase _____

WARRANTY

One Year Limited Warranty

The Ardisam, Inc., Manufacturing Company warrants this Eskimo® Ice Auger to be free from defects in material or workmanship. Conditions of this warranty include:

What is covered under warranty:

Ardisam, Inc. will repair or replace any part defective in workmanship or material within one year after delivery of the ice auger to the original purchaser.

What is not covered under warranty:

This warranty applies only to products which have not been repaired or altered outside our factory. It covers only defects resulting from normal use, and does not cover defects arising from misuse, alteration, negligence, commercial use, or accident. This warranty applies only to the original purchaser, and is not transferrable.

How to obtain service:

Return the product to us at the address below with transportation charges prepaid.

This warranty supersedes all other warranties either expressed or implied and all other obligations or liabilities on our part. Ardisam, Inc., does not assume, and does not authorize any other person to assume for us, any liability in connection with the sale of our products. This guarantee is void unless warranty card is properly filled out and returned to Ardisam, Inc., Cumberland, Wisconsin, at time of purchase.



Ardisam, Inc.
1690 Elm Street, Cumberland, WI 54829
1-800-345-6007 • 1-715-822-2415
Email info@ardisam.com
www.ardisam.com



SAFETY

Owner's Responsibility

Accurate assembly and safe and effective use of the auger is the owner's responsibility.

- Read and follow all safety instructions.
- Carefully follow all assembly instructions.
- Maintain the auger according to directions and schedule included in this Eskimo operator's manual.
- Ensure that anyone who uses the auger is familiar with all controls and safety precautions.

Special Messages

Your manual contains special messages to bring attention to potential safety concerns, machine damage as well as helpful operating and servicing information. Please read all the information carefully to avoid injury and machine damage.

 **CAUTION**

Avoid injury! This symbol and text highlight potential hazards or death to the operator or bystanders that may occur if the hazards or procedures are ignored.

 **IMPORTANT**

Avoid damage! This text is used to tell the operator of actions or conditions that might result in damage to the machine.

NOTE: General information is given throughout the manual that may help the operator in the operation or service of the machine.

 **WARNING**

CALIFORNIA PROPOSITION 65 WARNING

Engine exhaust from this product contains chemicals known to the State of California to cause cancer, birth defects, or other reproductive harm.

Important Safety Precautions

Please read this section carefully. Operate the auger according to the safety instructions and recommendations outlined here and inserted throughout the text. Anyone who uses this auger must read the instructions and be familiar with the controls.



This symbol points out important safety instructions which if not followed could endanger your personal safety. Read and follow all instructions in this manual before attempting to operate this equipment.

- The ice blades are very sharp. Use extreme caution when drilling a hole or replacing the blades. Put blade guard on after each use.
- Do not carry the auger powerhead between holes with the engine running.
- The auger should not rotate when the engine is idling. If it does rotate when engine is idling, contact Ardisam, Inc. for instructions.
- Always hands, feet, hair and loose clothing away from any moving parts on engine and auger.
- Do not allow children to operate this power auger. Do not allow adults to operate the auger without proper instruction.
- Do not operate any power equipment under the influence of alcohol or drugs.
- Keep all screws, nuts and bolts tight.
- Engine should be turned off and cool, spark plug wire must be removed from spark plug before any repairs are attempted.
- Temperature of muffler and nearby areas may exceed 150° F (65° C). Avoid these areas.
- Never run engine indoors or in an enclosed area. Engine exhaust contains carbon monoxide, an odorless and deadly gas.
- If the ice auger becomes unturnable in a hole, turn engine off and allow to cool before attempting to remove it manually.



OPERATION

OPERATION

CAUTION

Please do not start your auger until you have read the Tecumseh Operator's Manual that came with your engine, and the section in this manual titled Safety. If you have read these, follow the steps below to start your auger. Always perform this pre-start checklist before starting the engine.

1. Read the Tecumseh Operator's Manual and follow instructions for fuel type, starting, etc. **USE PROPER GAS/OIL MIXTURE.**
2. The clutch will transfer maximum power after about two hours of normal operation. During this break-in period clutch slippage may occur. The clutch should be kept free of oil or other moisture for efficient operation.
3. Dig holes without placing excessive body weight on the unit. The auger operates most efficiently with a shaving action caused by the weight of the unit itself.
4. Never run engine indoors. Exhaust fumes are deadly.
5. Do not use an ice auger as an earth auger.
6. The ice auger blade protector should be attached to the auger head when not in use. This will protect the cutting edge of the ice auger blades.

FUEL MIXTURE

CAUTION

Never fill gas tank indoors. Never add gas when engine is running or hot from operation. Do not smoke when filling gas tank. Never allow children to refuel gas tank.

IMPORTANT

This engine uses a gas/oil mixture. **DO NOT RUN ENGINE ON STRAIGHT GAS ONLY. ENGINE DAMAGE WILL RESULT!**

1. Mix clean, fresh, lead-free gasoline (minimum of 77 octane) with a high quality 2 cycle engine oil at the ratio of 5 oz. oil to 1 gallon gasoline.

(Refer to your Tecumseh Operator's Manual for further information on fuel.)

2. Mix fuel in a 1 or 2 gallon container approved for gasoline.
3. Loosen fuel cap slowly. Rest the cap on a clean surface.
4. Carefully pour fuel into the tank. Avoid spillage.
5. Immediately replace fuel cap and hand tighten. Wipe up any fuel spillage.

STARTING AND STOPPING

CAUTION

Do not hold throttle lever wide open while starting. Loss of control of auger could result.

TO START:

1. To avoid carbon monoxide poisoning, move engine outdoors to a well ventilated area.
 2. Open gas cap vent if your engine is so equipped.
 3. Flip the toggle switch to the **on** position.
 4. Move choke lever to **full choke** position if engine is cold. **DO NOT** use primer or choke to start a warm engine.
- NOTE: 3-HP model may require use of the primer bulb when cold, push three times before starting (five times in colder temperatures).**
5. Pull recoil starter until engine fires.
 6. Move choke lever to **half choke** position (midway between off and full).
 7. Pull recoil starter until engine runs.
 8. Keep at **half choke** position until engine runs smoothly.
 9. Move choke lever to **off** position.
 10. Move throttle control to desired speed.

TO STOP:

Flip the toggle switch to the **off** position.

Refer to the Tecumseh Operator's Manual for more details.



MAINTENANCE AND STORAGE

CAUTION

To prevent accidental starting:
Avoid injury! Engine must be turned off and cool, and spark plug wire must be removed from spark plug before checking and adjusting engine or equipment.

CAUTION

Avoid injury! Temperature of muffler and nearby areas may exceed 150° F (65° C). Avoid these areas.

CAUTION

Avoid injury! Check auger often for loose nuts and bolts. Keep these items tightened.

MAINTENANCE

1. The gear case has 4 oz. of grease installed at the factory. It is recommended that once a year the gear case be split and the grease level checked. Add grease only if level of grease is below top of the gears. **DO NOT OVERFILL.**
2. Keep all screws, nuts, and bolts tight.
3. For cold weather operation, store the unit in a cool environment. Transferring the unit from a warm to a cold place can cause the build up of harmful condensation.
4. Always replace blade protector when power auger is not in use.
5. Do not fill gas tank indoors or when engine is running or is hot.

ENGINE MAINTENANCE

CAUTION

Do not operate auger before reading the Tecumseh Operator's Manual provided in the parts packet.

1. For engine maintenance, refer to Tecumseh Operator's Manual.

IMPORTANT

Engine can overheat and become damaged if debris blocks the cooling fins or recoil housing.

Refer to the Tecumseh Operator's Manual included in your parts packet for information on engine maintenance. Your Tecumseh Operator's Manual provides detailed information and a maintenance schedule for performing the following tasks:

1. Check air cleaner.
2. Keep engine and engine parts clean.

STORAGE

CAUTION

Do not store auger in an unventilated area where fuel fumes may reach an open flame, spark or pilot light.

CAUTION

Drain fuel outdoors, away from any ignition sources. Use only approved fuel containers. Engine must be cool. Do not smoke.

Follow the steps below to prepare your auger for storage. Read your Tecumseh Operator's Manual for detailed instructions on preparing the engine for storage.

1. Clean entire auger.
2. Store your auger in a clean, dry building that is inaccessible to children.
3. Always replace blade protector when power auger is not in use.
4. Remove auger from the powerhead (engine) and apply a thin layer of grease to the output shaft (8913).
5. When storing your Eskimo® ice auger for over one month, it must be stored in a vertical (upright) position.



SERVICE, TROUBLESHOOTING AND REPAIR

SERVICE INFORMATION



IN CASE OF A SERVICE PROBLEM, DO NOT SEND UNIT BACK TO RETAILER. CONTACT ARDISAM, INC. AT 1-800-345-6007.

At Ardisam, we build quality and durability into the design of our products; but no amount of careful design by us, and careful maintenance by you, can guarantee a repair-free life for your auger. Most repairs will be minor, and easily fixed by following the suggestions in the troubleshooting guide in this section.

The guide will help you pinpoint the causes of common problems and identify remedies.

For more complicated repairs, you may want to rely on your retailer, an authorized mechanic or Ardisam, Inc. (contact your retailer for a list of authorized mechanics in your area). A parts catalog is included in this section.

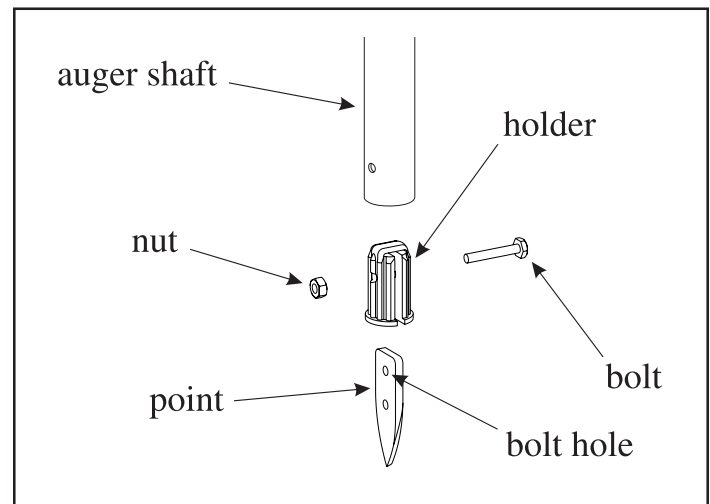
We will always be glad to answer any questions you have, or help you find suitable assistance. To order parts or inquire about warranty, call or write us at the address found in the next column under the section ordering repair parts or check out our website - www.ardisam.com

ICE POINT REPLACEMENT

1. Remove blade protector and both blades.
2. Remove nut and retaining bolt from point.
3. Using a locking pliers, grasp point and pull out. If holder doesn't come out with the point, remove with pliers.
4. With locking pliers, push in new point and holder aligning bolt hole in point with holes in auger shaft. **DO NOT DAMAGE END OF POINT.**
- NOTE: When installing holder in auger shaft, edges of holder may shave off.**
5. Insert retaining bolt and tighten with nut.
6. Re-attach both blades and put blade protector back on.

CAUTION

Auger blades and point are extremely sharp. Use caution when removing & replacing.





SERVICE, TROUBLESHOOTING AND REPAIR

ORDERING REPAIR PARTS

Parts can be obtained from the store where your auger was purchased or direct from the factory. To order from the factory, call or write to:

Ardisam, Inc.
1690 Elm Street, Cumberland, WI 54829
1-800-345-6007 • 1-715-822-2415
Email info@ardisam.com
www.ardisam.com

Please include the following information with your order:

1. Part numbers
2. Part description
3. Quantity
4. Model number and serial number

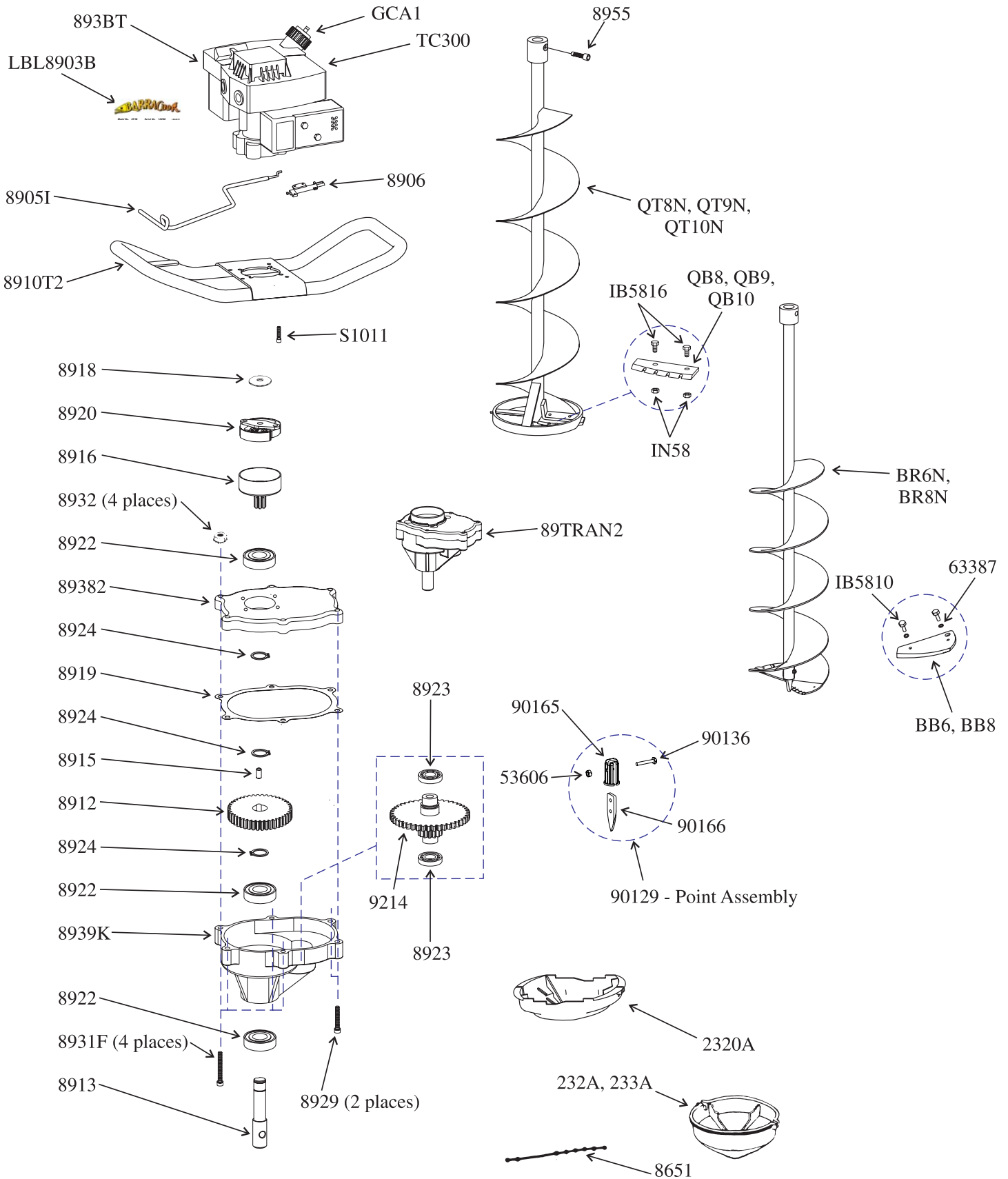


CAUTION

Practice safety at all times. Engine must be turned off and allowed to cool, and spark plug wire must be disconnected before attempting any maintenance or repair.

TROUBLESHOOTING

Problem	Possible cause	Remedy/Action
Engine will not start	<ol style="list-style-type: none"> 1. Power switch off 2. Spark plug wire disconnected 	<ol style="list-style-type: none"> 1. Flip switch to on position 2. Connect spark plug wire to spark plug
Engine runs rough, floods during operation	<ol style="list-style-type: none"> 1. Dirty air cleaner 2. Choke partially engaged 3. Carburetor out of adjustment 	<ol style="list-style-type: none"> 1. Clean or replace air cleaner 2. Turn off choke 3. Call factory
Engine is hard to start	<ol style="list-style-type: none"> 1. Stale fuel 2. Spark plug wire loose 3. Dirty carburetor 	<ol style="list-style-type: none"> 1. Drain old fuel and replace with fresh. Use gas stabilizer at end of season 2. Make sure spark wire is securely attached to spark plug 3. Clean carburetor, use gas stabilizer, new gas can
Engine misses or lacks power	<ol style="list-style-type: none"> 1. Clogged fuel tank 2. Clogged air cleaner 3. Improper carburetor adjustment 4. Spark plug dirty, improper gap, or wrong type 	<ol style="list-style-type: none"> 1. Remove and clean 2. Clean or replace 3. Call factory 4. Replace spark plug and adjust gap
Auger turns at idle	<ol style="list-style-type: none"> 1. Idle speed too high 2. Broken clutch spring 	<ol style="list-style-type: none"> 1. Adjust idle speed lower 2. Replace both springs
Auger turns, but has no power	<ol style="list-style-type: none"> 1. Choke on 2. Carburetor out of adjustment 3. Broken transmission 4. Worn clutch shoes 5. Worn engine lower seal 	<ol style="list-style-type: none"> 1. Turn off choke after engine is running 2. Call factory 3. Call factory 4. Replace clutch shoes and springs 5. Call factory
Auger jumps on ice	<ol style="list-style-type: none"> 1. Blades damaged or sharpened incorrectly 	<ol style="list-style-type: none"> 1. Replace with new blades, or have blades sharpened at factory
Auger cuts slowly	<ol style="list-style-type: none"> 1. Dull blades 2. Damaged point 	<ol style="list-style-type: none"> 1. Replace with new blades, or have blades sharpened at factory 2. File point, or replace point
Engine runs, then quits	<ol style="list-style-type: none"> 1. Gas cap not venting 2. Screen in carburetor plugged 	<ol style="list-style-type: none"> 1. Check screw vent gas cap 2. Clean screen, use gas stabilizer, clean gas can





BARRACUDA PARTS LIST



MINIMUM ORDER \$10.00

POWERHEAD PARTS

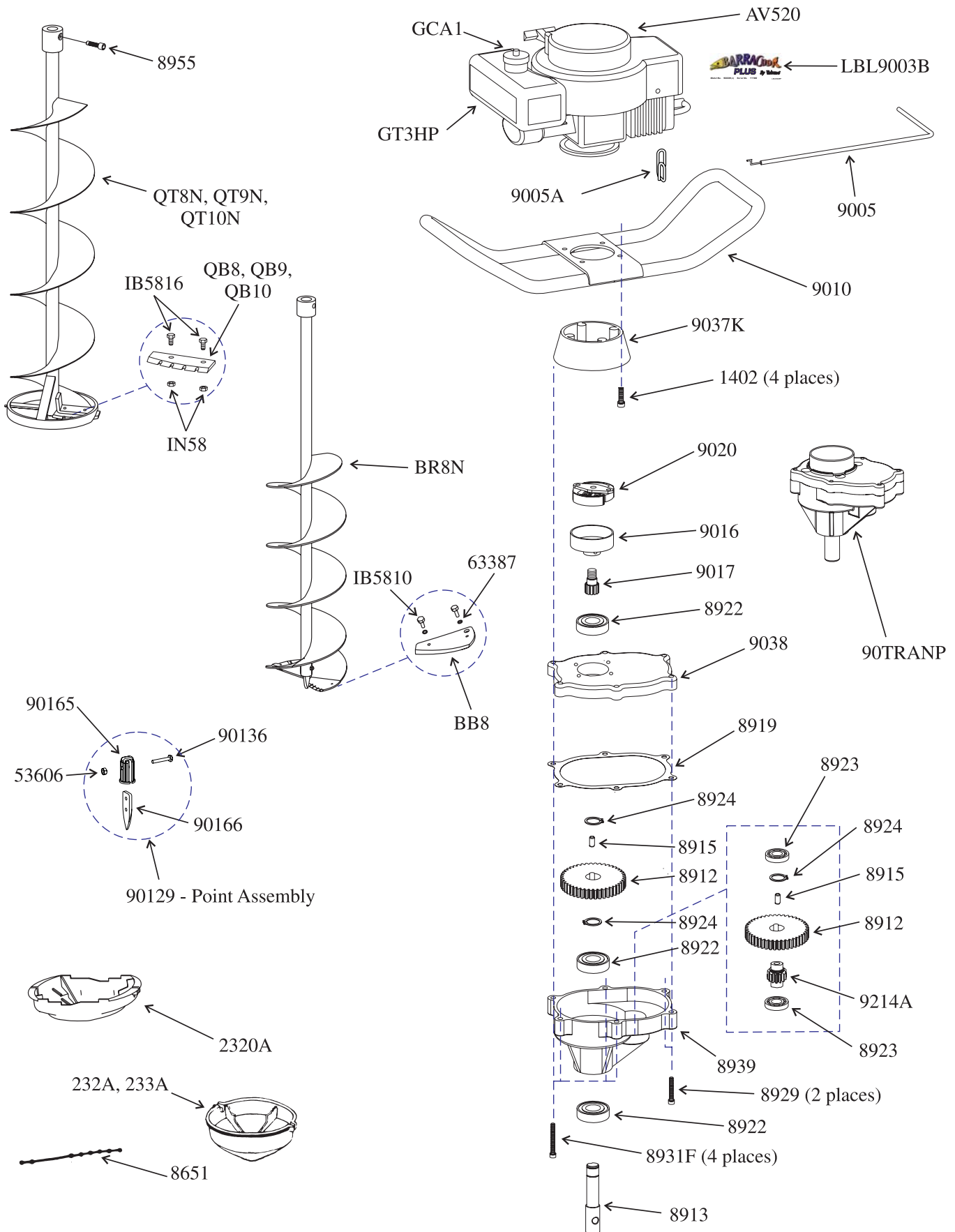
<u>Part #</u>	<u>Description</u>	<u>Qty.</u>
60G70	Toggle Switch	1
89051	Throttle Control Rod	1
8906	Throttle Control, TC-300 engine	1
8910T2	HandleBar, w/throttle mounting tab	1
8912	44T Gear	1
8913	Output Shaft, 7/8"	1
8915	Dowel Pin, 1/4" x 1/2", hardened steel	1
8916	Clutch Drum & 7T Pinion Gear	1
8918	Washer-Clutch, hardened steel	1
8919	Gasket	1
8920	Centrifugal Clutch Rotor	1
8922	Ball Bearing	3
8923	Ball Bearing	2
8924	Snap Ring	3
8929	Bolt-SHCS, 1/4-20 x 1-1/2" (gear case bottom to gear case top)	2
8931F	Bolt-SHCS, 1/4-20 x 2", full thread (gear case to handlebar plate)	4
8932	Nut-Hex, 1/4-20 Keps	4
89382	Gear Case Top	1
8939	Gear Case Bottom	1
893BT	Gas Tank, clear	1
89TRAN2	Complete Transmission	1
9214	48T Gear & 10T Pinion Gear , one piece unit	1
GCA1	Gas Cap	1
ILBL8903B	Decal, Barracuda, serialized	1
LBL891F	Decal, Barracuda, auger flight	1
LBLBPE	Decal, Eskimo, blade protector	1
LBLESKS	Decal, Eskimo oval, auger stem & handlebar plate	2
MG8900	Muffler Guard (not shown)	1
S1011	Bolt-SHCS, 1/4-20 x 3/4" (handlebar plate to engine)	4
TC300	Gas Engine, 2-hp Tecumseh	1

POWER AUGER PARTS

<u>Part #</u>	<u>Description</u>	<u>Qty.</u>
232A	Blade Protector, fits 6"-8" quantum auger	1
2320A	Blade Protector, fits 6"-8" turbo auger	1
233A	Blade Protector, fits 9" & 10" quantum	1
53606	Nut, #10, nyloc	1
63387	Lockwasher, 5mm	4
8651	Strap, Blade Protector	1
8955	Auger Bolt-SHCS, 3/8-16 x 1-1/4" (auger to powerhead)	1
90129	Point Replacement Assembly	1
90136	Bolt, #10-24 x 1-1/4" stainless	1
90165	Point Holder	1
90166	Point	1
BB6	Ice Blades, 6" TurboCut	2
BB8	Ice Blades, 8" TurboCut	2
BR6N	Ice Auger, 6" Turbo	1
BR8N	Ice Auger, 8" Turbo	1
IB5810	Bolt, 5mm x 0.8 x 10mm, (turbo ice blade to auger)	4
IB5816	Bolt, 5mm x 0.8 x 16mm, (ice blade to auger)	4
IN58	Nut, 5mm x 0.8 nyloc, (ice blade to auger)	4
QB8	Ice Blades, 8" Quantum, set of two	1
QB9	Ice Blades, 9" Quantum, set of two	1
QB10	Ice Blades, 10" Quantum, set of two	1
QT8N	Ice Auger, 8" Quantum	1
QT9N	Ice Auger, 9" Quantum	1
QT10N	Ice Auger, 10" Quantum	1

ACCESSORIES

EXT6	Depth Extension, 6"
EXT12	Depth Extension, 12"
EXT18	Depth Extension, 18"





BARRACUDA PLUS PARTS LIST



MINIMUM ORDER \$10.00

POWERHEAD PARTS

<u>Part #</u>	<u>Description</u>	<u>Qty.</u>
1402	Bolt-SHCS, 5/16-18 x 1-1/4" (mount ring to engine)	4
60G70	Toggle Switch	1
8912	44T Gear	2
8913	Output Shaft, 7/8"	1
8915	Dowel Pin, 1/4" x 1/2", hardened steel	2
8919	Gasket	1
8922	Ball Bearing	3
8923	Ball Bearing	2
8924	Snap Ring	3
8929	Bolt-SHCS, 1/4-20 x 1-1/2" (gear case bottom to gear case top)	2
8931F	Bolt-SHCS, 1/4-20 x 2", full thread (gear case to handlebar plate)	4
8932	Nut-Hex, 1/4-20 Keps	4
8939	Gear Case Bottom	1
9005	Throttle Control Rod	1
9005A	Throttle Control Twist	1
9010	Handlebar	1
9016	Clutch Drum, 3" threaded	1
9017	12T Pinion Gear, threaded	1
9020	Centrifugal Clutch Rotor	1
9037K	Mount Ring (handlebar to gear case top)	1
9038	Gear Case Top	1
90TRANP	Complete Transmission	1
9214A	10T Pinion Gear	1
AV520	Gas Engine, 3-hp Tecumseh	1
GCA1	Gas Cap	1
GT3HP	Gas Tank, black	1
LBL891F	Decal, Barracuda, auger flight	1
LBL9003B	Decal, Barracuda Plus, serialized	1
LBLBPE	Decal, Blade Protector, Eskimo	1
LBLESKS	Decal, Eskimo oval, auger stem & handlebar plate	2

POWER AUGER PARTS

<u>Part #</u>	<u>Description</u>	<u>Qty.</u>
232A	Blade Protector, fits 6"-8" quantum auger	1
2320A	Blade Protector, fits 6"-8" turbo auger	1
233A	Blade Protector, fits 9" & 10" quantum	1
53606	Nut, #10, nyloc	1
63387	Lockwasher, 5mm	4
8651	Strap, Blade Protector	1
8955	Auger Bolt-SHCS, 3/8-16 x 1-1/4" (auger to powerhead)	1
90129	Point Replacement Assembly	1
90136	Bolt, #10-24 x 1-1/4" stainless	1
90165	Point Holder	1
90166	Point	1
BB8	Ice Blades, 8" TurboCut	2
BR8N	Ice Auger, 8" Turbo	1
IB5810	Bolt, 5mm x 0.8 x 10mm, (turbo ice blade to auger)	4
IB5816	Bolt, 5mm x 0.8 x 16mm, (ice blade to auger)	4
IN58	Nut, 5mm x 0.8 nyloc, (ice blade to auger)	4
QB8	Ice Blades, 8" Quantum, set of two	1
QB9	Ice Blades, 9" Quantum, set of two	1
QB10	Ice Blades, 10" Quantum, set of two	1
QT8N	Ice Auger, 8" Quantum	1
QT9N	Ice Auger, 9" Quantum	1
QT10N	Ice Auger, 10" Quantum	1

ACCESSORIES

EXT6	Depth Extension, 6"
EXT12	Depth Extension, 12"
EXT18	Depth Extension, 18"



Ardisam, Inc.
1690 Elm Street, Cumberland, WI 54829
1-800-345-6007 • 1-715-822-2415
Email info@ardisam.com
www.ardisam.com